



Designing Manufacturing Excellence

▣ Maximizing Factory Performance

- Metrics based Process Controlled Manufacturing
- 99.95% Quality levels
- 99.5% on-Time Delivery
- Factory design/Re-Layout and Optimization for Low Mix/Hi Volume and High Mix/Low Volume Factory and Lines
- Overall Operational Excellence by Design
- Quality Systems Review and
- Process Review.
- Non-value added Operation and process review and removal



- Maximizing Factory Performance
 - Lean Inventory.
 - “People to Product” Philosophy
 - Automation of Manual Operations
 - On-Line factory Documentation and Networking
 - Cost Reduction Programs-PIP Programs
 - Cross Training Implementation Programs
 - Automated test Performance and Evaluation
 - Inventory Excellence in Measurement

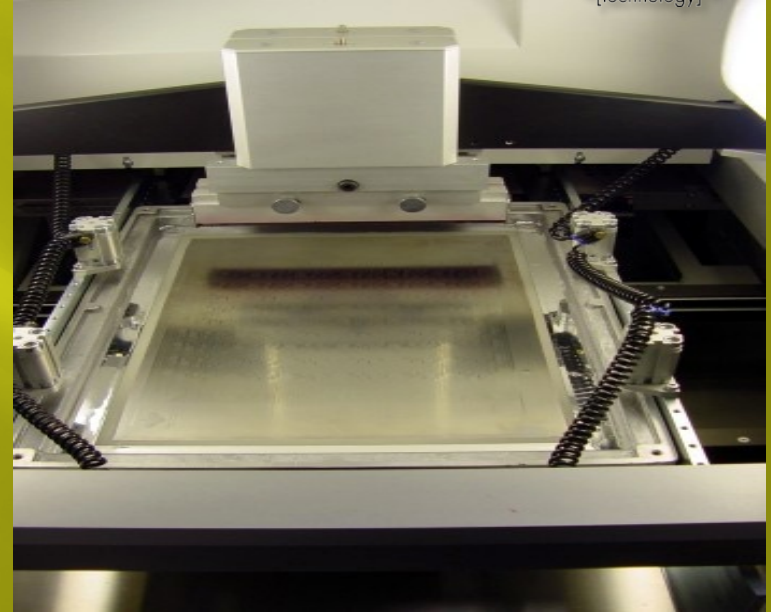
MAINLINE EQUIPMENT INC. TORRANCE , CA.



Laser Board Printer



Glue Paste 1 of 3

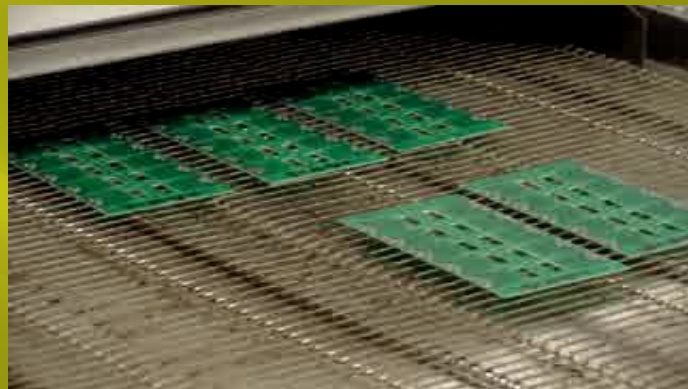


PHILIPS/MANNIX SMT LINE-1 of 4 SMT LINES

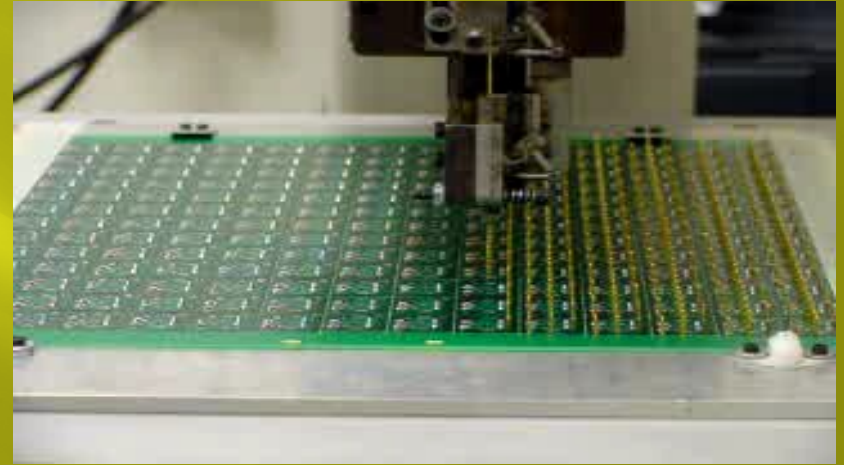


12 ZONE REFLOW OVENS

MAINLINE
INCORPORATED



PINNING AUTOMATED



Coil Winding Equipment



ASSEMBLY LINE



WAVE SOLDERING



WAVE SOLDER



BOARD CUTTER



INSPECTION



TEST BENCHS

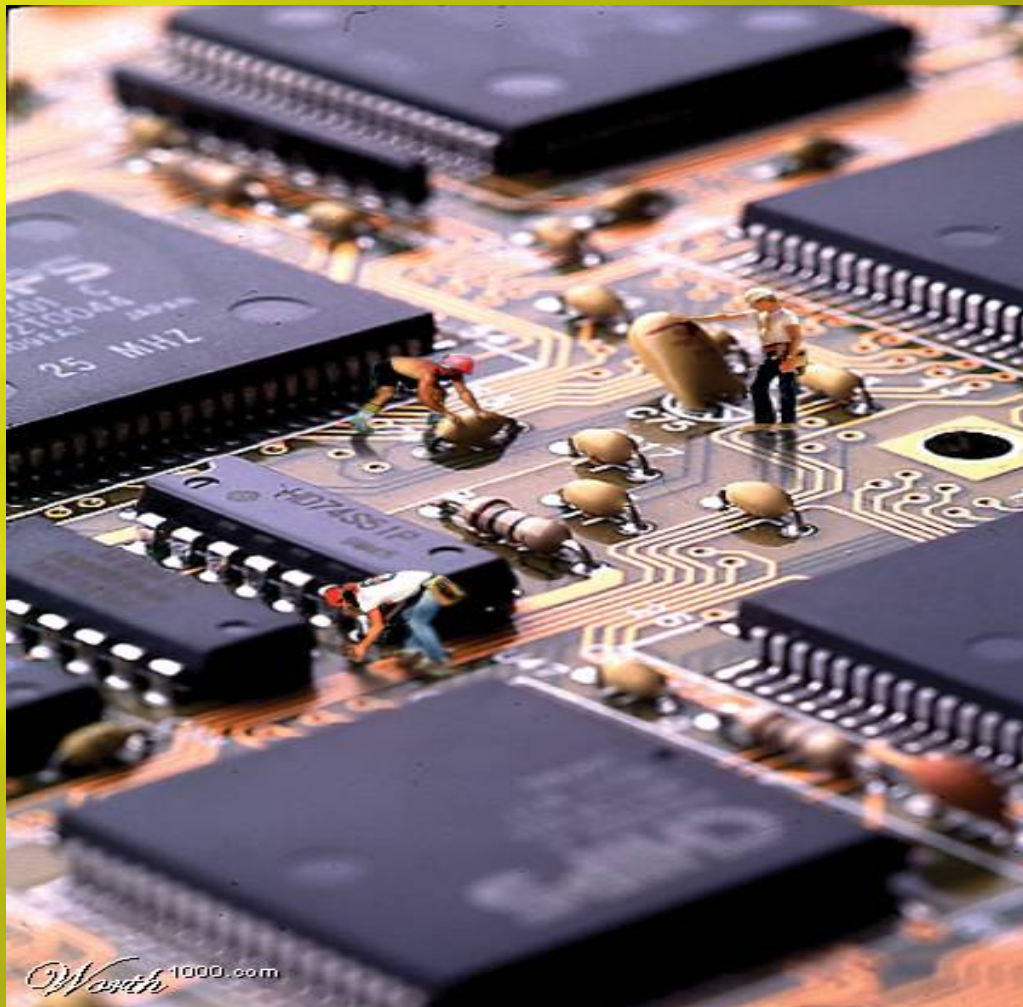


TEST



FINAL PAD STAMPING





Worth 1000.com



Bar coded inventory



Bar coding is available on virtually all items!

3350 items



RF Amplifier Stations



- ▣ Software automated test process
- ▣ Software assisted fault isolation
- ▣ ESD workstation

Optical Node Test Station



- ▣ Manual and software ATE test stations

Test Chamber

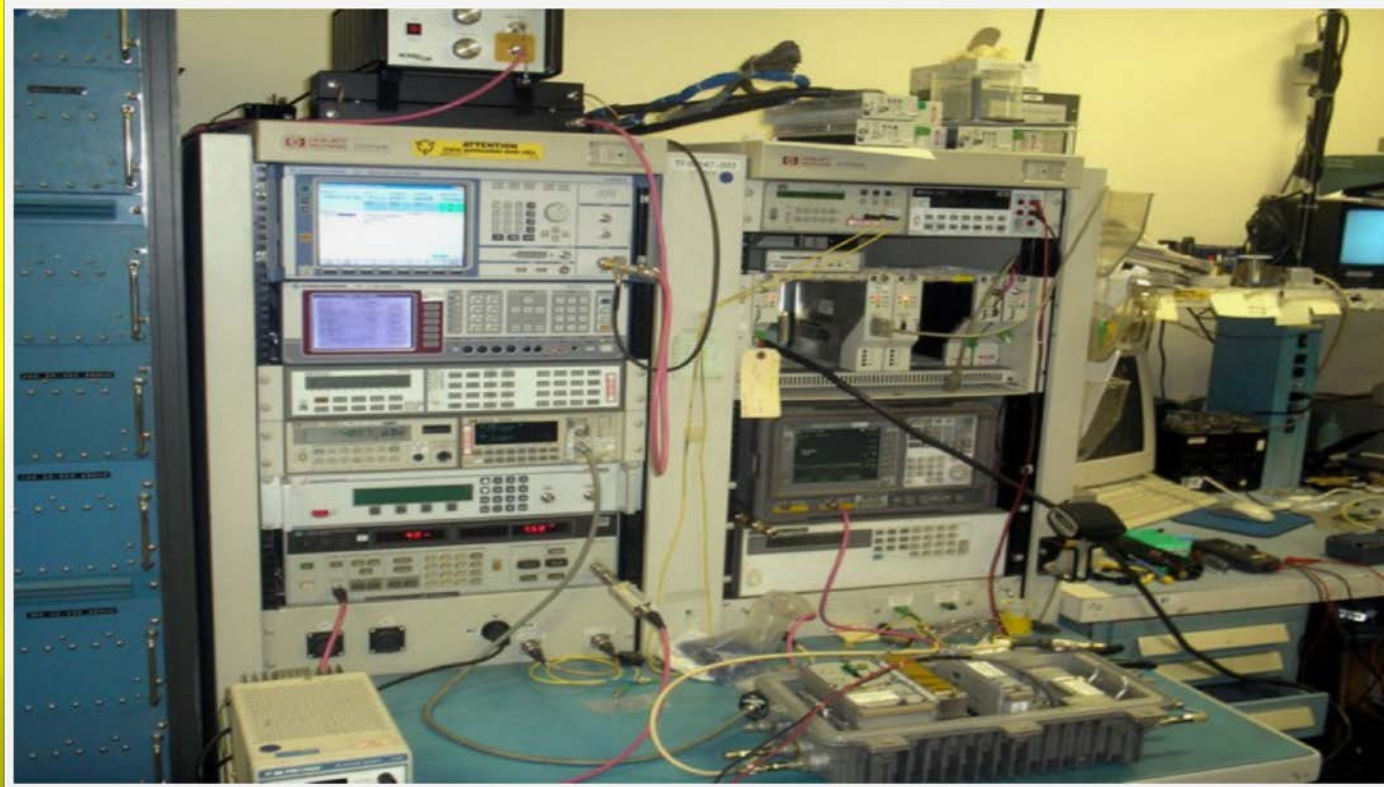


**Automated
Heat/Cooling
Chamber
Key-tec system
Matrix Generator
with QAM**

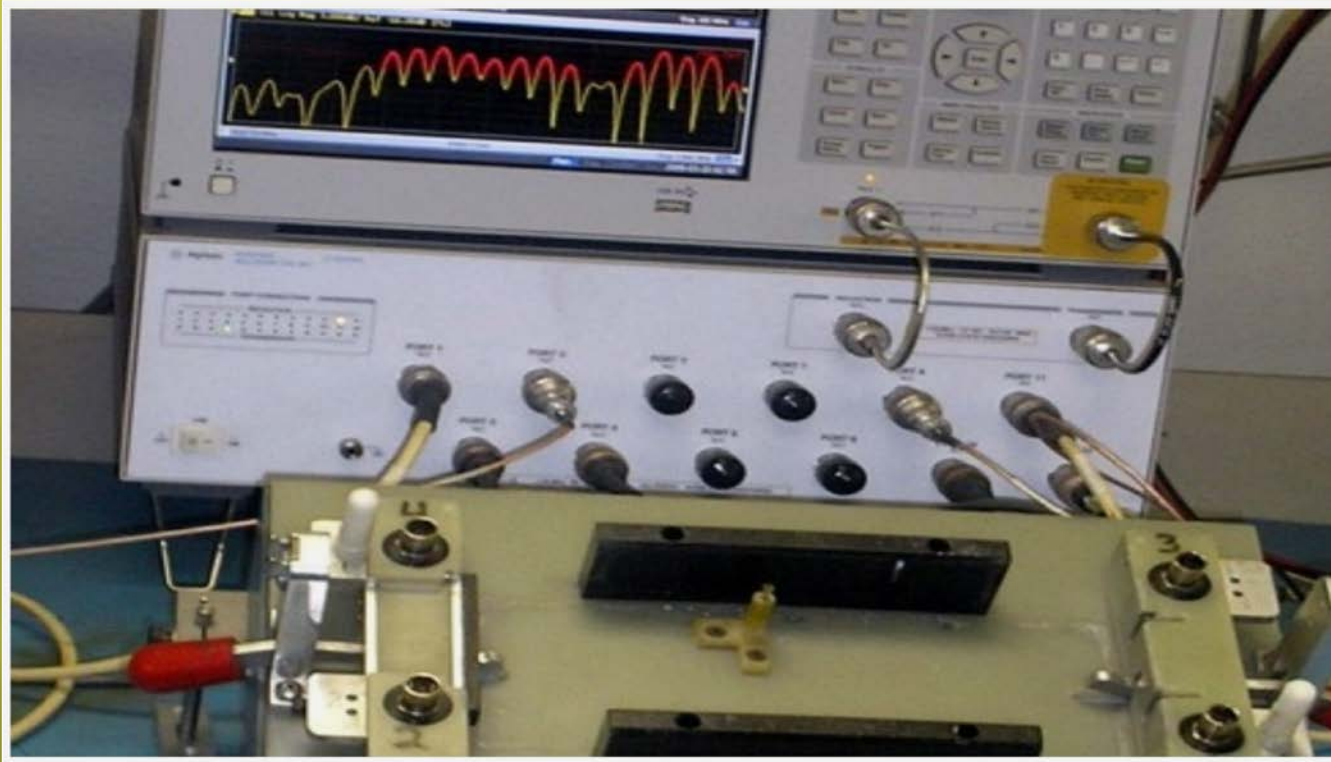
Test Chamber



Test Equipment



Test Equipment



Matrix Generators



- ▣ 2 separate systems
- ▣ All test equipment calibrated at the original manufacturer.

Fiber Optic Test Stations



- ▣ Software automated test process
- ▣ ESD workstation
- ▣ Late model test equipment